

WARMER
DAYS ARE
ON THEIR
WAY...

SPRING
SPECIALS

VALID TO 30 DECEMBER 2019

GET IT DONE!

WITH THE TEAM AT

STEVENSON & TAYLOR



**NEW TRACTORS AND
MACHINERY**
PAGES 2 - 14



**USED TRACTORS AND
MACHINERY**
PAGES 15 - 17



**HAVE QUESTIONS?
CONTACT US FOR
MORE INFORMATION**

0800 427 322
info@sntltd.co.nz
2294 Takapau Road,
Waipukurau, Hawke's Bay
stevensonandtaylor.co.nz

CASE IH PUMA 240 CVT ULTIMATE

- 240hp (270 hp power boost)
- 50 Kph CVT transmission
- Exhaust brake
- 5 rear hydraulic remotes
- GPS ready
- Air compressor and air trailer brakes
- 360 deg lighting package
- Full leather interior package

\$216,000+GST

FINANCE AVAILABLE



LAST ONE AT THIS PRICE!



FULL LEATHER INTERIOR

CASE IH FARMALL 35B

Popular lifestyle choice



- 35HP hydrostatic drive
- 4 cylinder Mitsubishi
- Great loader options

\$22,990+GST

FINANCE AVAILABLE

CASE IH FARMALL 50B

Loader options available



- 50HP hydrostatic drive (3 stage)
- 2.5 litre 4 cylinder engine

\$27,900+GST

FINANCE AVAILABLE

CASE IH PUMA 155 FPS T3 CLASSIC

Renowned Austrian build spec



- 155HP (193HP power boost)
- 748NM torque
- Full power shift transmission

\$129,000+GST*

*BASED ON CASH PRICE. FINANCE AVAILABLE

CASE IH FARMALL 25B

Great landscaping or lifestyle tractor



\$21,990+GST* WITH LOADER

- Reliable Mitsubishi 25Hp engine
- Two range hydrostatic transmission
- Tough compact machine
- Loaders available

\$16,900+GST*

*BASED ON CASH PRICE. FINANCE AVAILABLE

CASE IH FARMALL 95C ROPS

Efficient design and easy reach controls



- 3.4 litre common rail turbo charged engine
- 24 x 24 2 speed power shift transmission
- Smart compact design

\$67,000+GST*

*BASED ON CASH PRICE. FINANCE AVAILABLE

CASE IH FARMALL JX 100 ROPS

Great value all rounder



- 3.9 litre 4 cylinder turbo
- 12 x 12 hydraulic power shuttle transmission

\$57,000+GST*

*BASED ON CASH PRICE. FINANCE AVAILABLE

CASE IH MAXXUM 140 ULTIMATE

Proven 6.75 litre 6 cylinder engine



- 113 L/min CCLS high flow hydraulic pump
- Cab Suspension
- Additional rear remotes
- Auto transmission mode
- Legendary Austrian build quality
- Stoll loader ready from factory

\$110,000+GST*

*BASED ON CASH PRICE. FINANCE AVAILABLE
**NEW ROOF AND LED LIGHTING PACKAGE

CASE IH MAXXUM 110 ULTIMATE

Great compact tractor for the HP it has



- Reliable 4.5 litre 4-cylinder engine
- Semi Power shift transmission

\$93,990+GST*

*BASED ON CASH PRICE. FINANCE AVAILABLE
**NEW ROOF AND LED LIGHTING PACKAGE

CASE IH JX 70 STRADDLE

Comes with L300 -70 loader



- Self-levelling loader
- Simple, robust and easy to use
- Mechanical wet brakes
- 40 L/min hydraulic pump

\$34,000+GST*

*BASED ON CASH PRICE. FINANCE AVAILABLE

CASE IH FARMALL U 115

Deluxe cab suspension



- High pressure common rail fuel injection
- 84 L/min hydraulic pump
- Configurable rear remotes

\$88,000+GST

FINANCE AVAILABLE

CASE IH MAXXUM 125 CLASSIC

Proven 6.75 litre 6 cylinder engine



- 113 L/min CCLS high flow hydraulic pump
- 3 x rear remotes
- Legendary Austrian build quality

\$95,000+GST*

*BASED ON CASH PRICE. FINANCE AVAILABLE
**NEW ROOF AND LED LIGHTING PACKAGE

CASE IH MAXXUM 140 CLASSIC LOADER READY

Farmer's choice



- Proven 6.75 litre 6 cylinder engine
- 16 x 16 semi power lift
- Stoll loader ready

\$105,000+GST*

*BASED ON CASH PRICE. FINANCE AVAILABLE
**NEW ROOF AND LED LIGHTING PACKAGE

CASE IH QUANTUM 95N ROPS GUARDED

35 L/min Steering pump (dedicated)



- 97HP/398Nm
- High flow 64l/min Hydraulic pump (dedicated to rear)
- Heavy duty front axle assembly

\$53,000+GST*

*BASED ON CASH PRICE.
FINANCE AVAILABLE

CASE IH QUANTUM 95N ROPS

Heavy duty front axle assembly



- 97HP/398Nm
- High flow 64l/min Hydraulic pump (dedicated to rear)
- 35 L/min Steering pump (dedicated)

\$49,000+GST*

*BASED ON CASH PRICE.
FINANCE AVAILABLE

KUHN GMD 310 MOWER

Superb ground contouring



- 3.1 mtr working width
- Superb ground contouring
- Proven brand and reliability

\$19,000+GST

FINANCE AVAILABLE

KUHN HR3004D POWER HARROW

Proven reliability



- 3 mtr working width
- 250Hp gearbox
- Air Seeder and drawbar options available

\$29,990+GST

FINANCE AVAILABLE

KUHN GA 13131 4 ROTOR RAKE

Full hydraulic drive



- 4 rotors 8.4 mtr - 12.5 mtr working width
- 1.5 mtr - 2.4 mtr windrow width
- 3 mtr transport width

\$139,000+GST

FINANCE AVAILABLE

KUHN MERGE MAXX 950

Increased productivity



- Pickup / belt driven crop merger
- Side, centre or both windrow options
- Increased productivity for balers and choppers with uniform windrow
- Full hydraulic control

\$157,000+GST

FINANCE AVAILABLE

KUHN GF7902 TEDDER

Proven performance and reliability



- 7.8 mtr 8 rotor mounted tedder
- High capacity rotor gearbox

\$26,990+GST

FINANCE AVAILABLE

KUHN VB3165 OPTICUT BALER

Great bale density



- Variable chamber 800mm - 1600mm
- Fast netting cycle
- Fixed service plans available

\$88,990+GST

FINANCE AVAILABLE

KUHN GA 7051 TWIN ROTOR RAKE

Proven Kuhn reliability



- 6.7-7.5mtr working width
- Removable tyne arms
- Manual Swath width adjustment,

\$42,000+GST

FINANCE AVAILABLE

KUHN FC 3125DF FRONT MOUNT MOWER

"PROTECTADRIVE" Gear train system



- 3.1 mtr working width
- Hydro-pneumatic Lift control

\$39,088+GST

FINANCE AVAILABLE

CASE IH TRANSPORT TRAY

Hot dip galvanised for longevity



- 1.5m wide

\$1,000+GST

FINANCE AVAILABLE

POTTINGER 3001 TERRADISC DEMO

Hydraulic depth control



- 3 mtr working width
- Rubber suspension on disc blades
- Heavy Duty frame for good disc penetration

\$29,990+GST

FINANCE AVAILABLE

HUSTLER 8 TON TIP TRAILER

8 ton capacity



- 4.2 x 2.5 Deck size
- 6mm Steel deck

\$25,990+GST

FINANCE AVAILABLE

HUSTLER MEGA SOFT HANDS

Handles both round and square bales



- 3 position adjustable hands
- 38 mm pins and bushes

\$3,600+GST

FINANCE AVAILABLE

POTTINGER HIT 800 HAY TEDDER

Hydraulic fence line control



- 7.85 mtr working width

\$16,990+GST

FINANCE AVAILABLE

POTTINGER NOVADISC 305 MOWER

Simple and easy to use



- 3.05 mtr working width
- Great dual purpose topping / hay cutting

\$19,000+GST

FINANCE AVAILABLE

HUSTLER CHAINLESS X2000

Feeds both round and square bales



- Simple and easy to use
- Proven design and reliability

\$11,000+GST

FINANCE AVAILABLE

HUSTLER SL300X BALE FEEDER

Adjustable width 3Pt linkage



- Covered Drive shafts
- 1250Kg rated

\$7,700+GST

FINANCE AVAILABLE

FIELDQUIP 909 HD CYCLONE TOPPER

Great value



- 2.7 mtr working width
- HD gearboxes
- Rubber shock absorbers on driveline
- Antiscalping discs rear land wheels

\$11,000+GST

FINANCE AVAILABLE

FIELDQUIP MJ31-300 MAJOR CYCLONE

Toughest flail mower on the market



- 2.85 mtr working width
- Multi flail spindles to tackle the tough stuff
- Made from Strenex 700 steel

\$21,000+GST

FINANCE AVAILABLE

ALPEGO KZ300 ROTA PICK DEMO

Ideal one pass machine



- Knife blade design ideal for hard ground
- Doesn't create panning on seed bed

\$29,000+GST

FINANCE AVAILABLE

ALPEGO TR26-140 MULCHER

Full width rear roller



- 1.4 Mtr working width
- Low profile steel body
- Cast steel flails 70mm dia capacity

\$9,000+GST

FINANCE AVAILABLE

GASCON TINE CHISEL CULTIVATOR

11 auto reset spring tines



- 2.8 mtr working width
- Strong 100 x 100 x 8 box steel frame

\$17,990+GST

FINANCE AVAILABLE

GASCON GR-RCHV305 OFF-SET DISC HARROWS DEMO

Hydraulic cut control



- Heavy duty 3 box section chassis
- Greaseable taper roller bearing

\$33,490+GST

FINANCE AVAILABLE

ALPEGO RK300 POWER HARROW

2 year warranty



- 3 Mtr working width
- 200 hp rated
- Double labyrinth rotor seal protection

\$31,000+GST

FINANCE AVAILABLE

JOSKIN MODULO 2 10000 LTR SLURRY TANKER

Jurop eco vacuum pump with exhaust



- Drawbar suspension
- Hot dip galvanised for longevity
- Hydraulic fill arm optional

\$49,000+GST

FINANCE AVAILABLE

PEARSON 2.4 MTR GRADER BLADE 3 HYD RAMS

Great allrounder for farm work



- 3 ram design offers full control from cab
- Proven NZ built design

\$8,490+GST

FINANCE AVAILABLE

PEARSON REAR QUICKHITCH

15 ton rated



- Wear plate under pin
- 35mm pin
- Line of sight to pin

\$1,450+GST

FINANCE AVAILABLE

KRONE EASYCUT R 320

Krone DuoGrip mower suspension



- 3.1 mtr working width
- Optimised Break back protection system

\$21,990+GST

FINANCE AVAILABLE

KRONE SWADRO TC760 TWIN ROTOR RAKE



- 6.8-7.6mtr working width
- 1-1.8mtr swath width
- Hyd operated width control
- Tines assemblies around the arm to prevent losses

\$49,000+GST

FINANCE AVAILABLE

MCINTOSH 4.5 TONNE TRAILER

4.5 tonne capacity



- Auto opening tail door
- 3.2m x 2.3m deck size
- Steel deck

\$14,000+GST

FINANCE AVAILABLE

MCINTOSH 10 TONNE TIP TRAILER

Hydraulic release tailgate



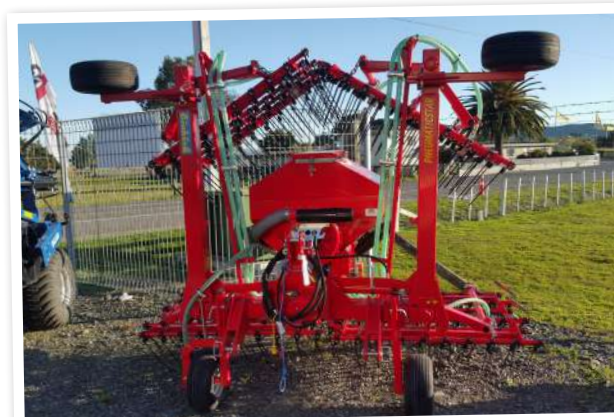
- Braked front axle
- 5 mm Corten deck

\$27,000+GST

FINANCE AVAILABLE

EINBOCH PNEUMATIC STAR STI 600 AIR SEEDER

Simple machine, great results



- 6 mtr working width
- 300 ltr tank capacity

\$25,000+GST

FINANCE AVAILABLE

BERTOLINI LS1000 SPRAYER

'K series' semi hydraulic boom



- 1000 ltr 12 mtr working width
- Heavy duty galvanised frame
- Hexagon GPS ready

\$18,990+GST

FINANCE AVAILABLE

RATA VERSATILE GRAPPLE 1.8 MTR

Great for rocks/logs etc



- Exceptional clamping force
- Grade 400 tines

\$7,900+GST

FINANCE AVAILABLE

SNT 3 PT LINKAGE WOOD SPLITTER

Vertical orientation for ease of use



- Built in our engineering workshop
- Heavy duty construction
- Hot Dip galvanised finish

\$6,490+GST

FINANCE AVAILABLE

DALBO MAXI ROLL 530

Snowflake rings (6 year warranty)



- 5.3 mtr working width
- Hydraulic cracker boards
- Rubber suspension bearings

\$38,000+GST

FINANCE AVAILABLE

SNT TYRE PACKER ROLLER

3.1 mtr working width



- Telescopic drawbar
- 1100 kg empty 1700 kg filled with water

\$5,400+GST

FINANCE AVAILABLE

GREGOIRE BESSON DVP 36 MP RIPPERS



- 3 mtr working width
- Auto reset legs
- Hard facing on legs and tips
- Good condition

\$9,990+GST

SNT 6 MTR TINE HD CULTIVATOR



- 6 mtr working width
- HD adjustable front "S" tines
- Great for cropped ground

\$22,000+GST

HUSTLER CHAINLESS X2000



- Great for round and square bales
- Tidy condition

\$5,500+GST

KUHN HR5003DR POWER HARROW



- 5 mtr working width
- Good condition
- Average paint

\$16,000+GST

SAM 6 CUBE SILAGE WAGON



- 6 cubic mtr capacity
- Centre feed
- Rebuilt steel floor

\$6,000+GST

2002 MAXAM 3300 MOWER



- Full workshop rebuild
- Twin wilter
- 3.3 mtr working width

\$7,900+GST

HOWARD HK31-300D POWER HARROW



- 3mtr working width
- Packer roller
- Rear drawbar

\$5,000+GST

BUCKTON SD/130 SILAGE WAGON



- Full workshop check
- New drive gearbox
- Side feed delivery

\$20,000+GST

2018 EINBOCH STI600 AIR SEEDER



- 6 mtr working width
- Like new condition
- Electric drive
- Low seed sensor

\$21,000+GST

FIELDMASTER GMM 2703 RT TOPPING MOWER



- Gearbox driven reliability
- NZ made
- Good condition

\$9,000 +GST

2017 KRONE ACTIVE MOW 360R



- 3.6 mtr working width
- Great condition
- Done 100 HA

\$15,000 +GST

METALFORM TOW AND MOW 1.2 MTR



- Ideal behind ATV or ute
- 1.2 mtr working width
- Locally manufactured

\$3,500 +GST

CASE IH MX100



- 100 hp
- Pearson loader
- New tyres to be fitted
- Proven reliability

\$28,000 +GST

FORD 5000 C/W LOADER



- Runs well
- Loader bucket / forks
- 2wd

\$5,000 +GST

2012 MASSEY FERGUSON 6465



- 118 hp
- Stoll loader
- Tidy condition

\$59,000 +GST

GREAT PLAINS 3.6 MTR DIRECT DRILL



- Twin seed boxes
- Twin small seed boxes
- Transport trailer included.

\$22,000 +GST

DUNCAN TFD TINE DRILL



- Electric metering
- 3 mtr sowing width (125mm spacing)
- Rear drawbar
- One season old

\$31,000 +GST

2006 DUNCAN AG RENOVATOR MK 3



- 3.5 mtr working width
- Dual box
- Disc openers
- Harrows

\$26,000 +GST

MASSEY FERGUSON 135 DIESEL



- Reasonable condition
- Classic kiwi tractor

\$4,000 +GST

2012 DEUTZ FAHR AGROFARM 100G



- Comes with loader
- Tidy Condition
- Good rubber all round
- 2200 hours

\$49,000 +GST

2008 RENAULT ARES 550 RZ



- 95 hp
- Trima loader with 3rd service
- 7660 hrs
- Good condition

\$28,000 +GST

HOOPER 2020 SERIES OFFSET DISCS



- 2.4 mtr working width
- Hydraulic transport wheels
- Reasonable condition

\$7,000 +GST

GASPARDO DIRECTA DP300 DIRECT DRILL



- 19 run seed and fert
- 150mm spacings
- Harrows and tow bar

\$17,000 +GST

2006 NEW HOLLAND TS100A



- MX loader
- 3970 Hrs
- Dual
- One owner from new

\$43,000 +GST

SAME SILVER 100.6



- Pearson loader
- New tyres front and rear
- Tidy condition

\$29,000 +GST

JOHN DEERE 2140 2WD



- 80HP
- Loader
- New king pins in front axle

\$12,000 +GST



CALL OUR SALES TEAM TODAY



DUNCAN HARDING

HEAD SALES CONSULTANT

027 444 2087

duncan@sntltd.co.nz



DAVE BEATTIE

SALES CONSULTANT

027 554 4008

dave@sntltd.co.nz



ADAM THOMSEN

SALES CONSULTANT

027 599 9150

adam@sntltd.co.nz



BRUCE GORE

SALES CONSULTANT

021 374 765

bruce@sntltd.co.nz

WHAT ELSE CAN WE HELP WITH?

**STEEL, ALLOY,
STAINLESS**



**OUTDOOR EQUIPMENT
SALES & REPAIRS**



**HEAVY MACHINERY
REPAIRS**



CALL US NOW ON 0800 427 322 OR 06 858 6041

ABOUT STEVENSON & TAYLOR

Founded in 1951 by Bill Stevenson, Peter Taylor and John Ferguson, we've been selling and servicing tractors and heavy machinery in Hawke's Bay for almost seven decades. Find more on our history at www.stevensonandtaylor.co.nz/who-we-are

ADDRESS

2294 Takapau Road
Waipukurau, Hawke's Bay

POST

PO Box 238
Waipukurau 4242